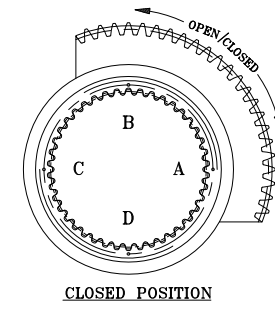
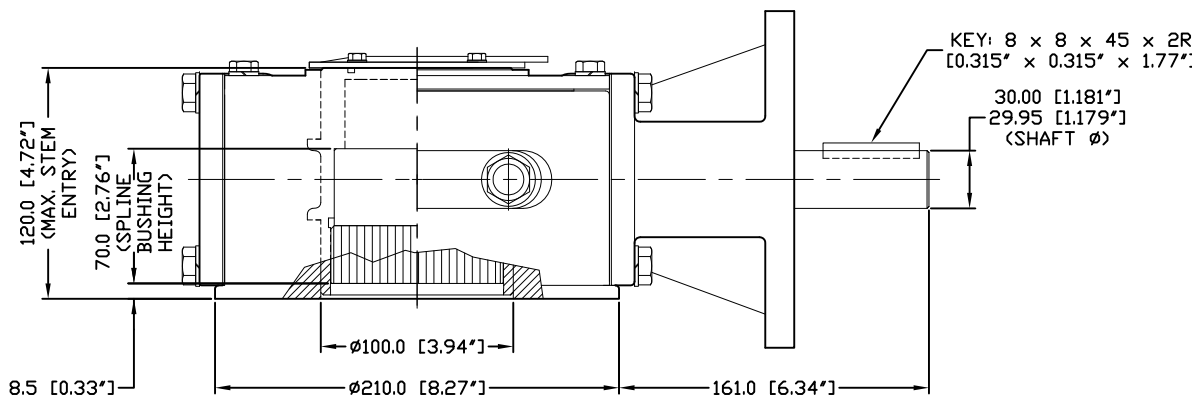
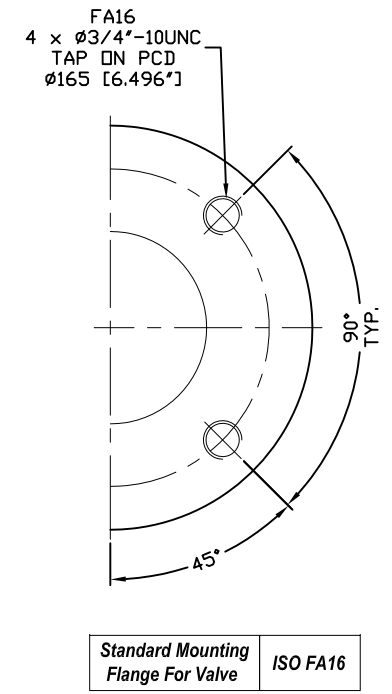
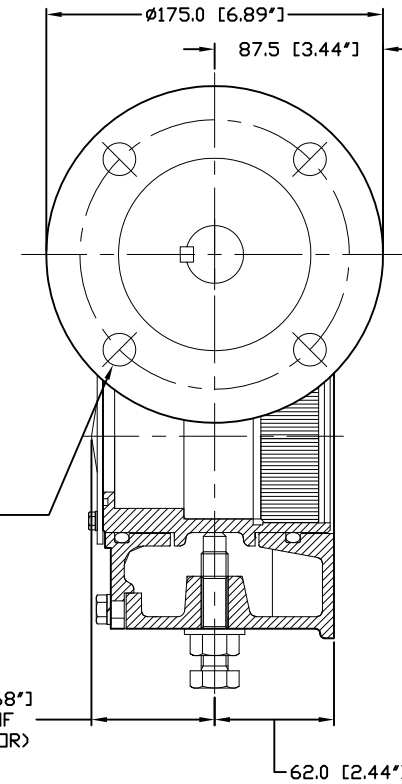
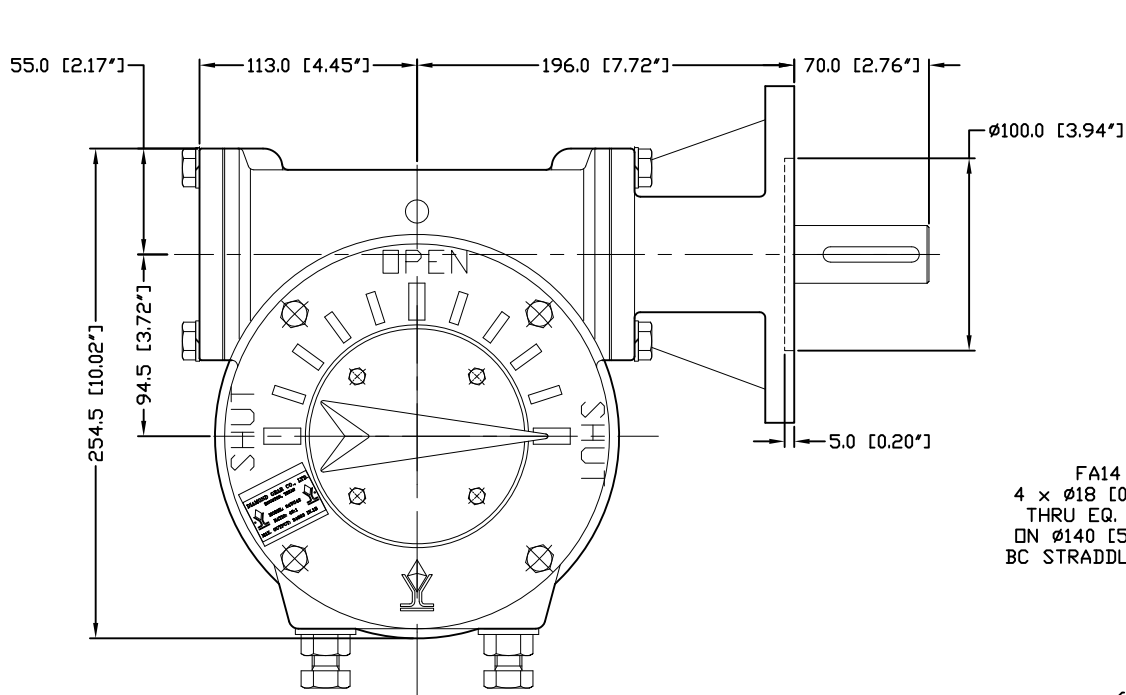


DIAMOND GEAR

24WG42



DIA.	RIM PULL AT MAX. 1/P TORQUE (Lbs.)
18"	178
20"	161
24"	134
30"	107
36"	89

UNITS: MM [Inches]

MAX. OUTPUT TORQUE [IN.LB]	MAX. INPUT TORQUE [IN.LB]	RATIO	MECHANICAL ADVANTAGE	OUTPUT ANGULAR STROKE	TURN PER 90°	WEIGHT [LB]	MAX. ROUND BORE [IN.]	MAX. SQUARE BORE [IN.]	EST. MAX. MOUNTING STRADDLE C/L [IN.]	EST. MIN. MOUNTING STRADDLE C/L [IN.]	STANDARD MOUNTING STRADDLE C/L [IN.]
24,893	1,606	42:1	15.5	±20°	10.5	51	Ø2.56" Key: 5/8 x 7/16"	1.75	Ø7.50	Ø5.00	FA16

C921119A

REV.B

5/11/17

CNC FLOW CONTROL
 HOUSTON, TEXAS, USA
 PHONE: 713-590-0270, FAX: 713-590-0278